

TATTLEAUX TRACK RECORD



Dating back to the 1980s, Tattleaux executives have invested in and managed all aspects of solar and other alternative/renewable energy projects: development, engineering, sales of power purchase and electricity subscription agreements, utility grid interconnection, construction, sponsor equity investment, debt and equity financing, operation and maintenance, and overall management.

Today, Tattleaux focuses only on Community Solar. Tattleaux has always employed a low overhead structure, preferring the use of short-term local resources for permitting, zoning, engineering and construction. Consistent with this localized approach, we invest in formal partnerships with local non-profit community organizations to spearhead our community solar and non-solar programs. Tattleaux's community partnerships generate for us significant efficiencies in obtaining both project sites and residential subscribers. Finally, Tattleaux's equity capital comes from high net worth individuals and families who allow us far more flexibility with our investments in projects and communities.

In summary, although Tattleaux's methods require greater up front investment at the local community level, overall, our low cost structure, flexible capital and ground level analytical approach enable us to deliver greater solar project volume.

COMMUNITY SOLAR AND DISTRIBUTED SOLAR GENERATION PHOTOVOLTAIC PROJECTS:

Locations: NJ, PA, MA, NH, MD, DC, GA, TX, CO, NC, FL, SC

No. of Community Solar or DSEG Projects: 59

Ground Mount: 42

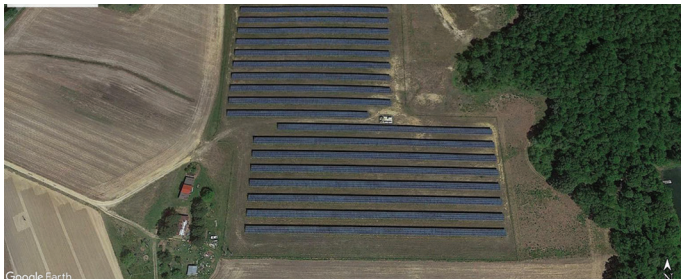
Rooftop: 14

Parking Canopy: 3

Total Electric Capacity Rating: 86 MW

Electricity Generated: 14,100 Average-sized Homes

Environmental Impact: 94,200 Tons of Carbon Emissions Reduced



III TATLEAUX SOLAR GROUP, LLC



Project: Waste-to-Energy | Location: western USA
Power Technology: Fluidized bed fueled by waste coal
Electrical Capacity Rating: 53 MW
Project Value: \$165,000,000



Project: Geothermal | Location: western USA
Power Technology: Geothermal Steam power project
Electrical Capacity Rating: 47 MW
Project Value: \$152,000,000



Project: Waste-to-Energy | Location: eastern USA
Power Technology: Fluidized bed fueled by waste coal
Electrical Capacity Rating: 87 MW
Project Value: \$274,000,000



Project: Cogeneration Facility | Location: eastern USA
Power Technology: gas cogeneration
Electrical Capacity Rating: 68 MW
Project Value: \$83,700,000



Project: Geothermal | Location: western USA
Power Technology: Geothermal Hot Water power plant
Electrical Capacity Rating: 2 MW
Project Value: \$11,300,000



Project: Cogeneration Plants | Location: northeast USA
Power Technology: Gas-fired cogeneration
Electrical Capacity Rating: 150 MW
Projects Value: \$238,400,000

Project: Geothermal Plant | Location: western USA
Power Technology: Geothermal Steam power plant
Electrical Capacity Rating: 80 MW
Project Value: \$291,500,000

Project: Geothermal Project | Location: western USA
Power Technology: Geothermal Hot Water power plant
Electrical Capacity Rating: 14 MW; expanded to include 12 MW PV solar
Project Value: \$48,200,000

Project: Re-Manufacturing and Worldwide Distribution
Location: midwest USA
Product: Surplus Auto Parts
Company Value: \$21,600,000



TATLEAUX DE PERA SOLAR GROUP

BOSTON • PRINCETON • WASHINGTON DC • CHICAGO